

The city is yours.



2017

Facts and Figures

COMPANY



Owner, distributor and publisher: Wiener Linien GmbH & Co KG
Design: Wiener Linien
Printers: Grasl, 2540 Bad Vöslau; subject to changes.
Printed on environmentally-friendly paper.

TRAM



A total of 332 ultra-low floor articulated tramcars (ULF A: 42 passengers seated, 94 standing; ULF B: 66 passengers seated, 141 standing or 54 seated and 159 standing) are used to transport passengers.

BUS



198 normal buses, 12 battery-powered buses and 259 low-floor articulated buses were in service at the end of 2017.

UNDERGROUND



65 'Silver arrows' (294 passengers seated, 546 standing) as well as 62 continuous, air-conditioned Type V underground trains (260 passengers seated, 622 standing) are in use on the U1, U2, U3 and U4 underground lines. 144 Type T railcars are in use on the U6 underground line (58 passengers seated, 136 standing).

History of the Vienna Underground

	1969	Start of underground construction work
	1978	Commissioning of the first section
U1	1982	Completion of the core network from Reumannplatz to Kagran
	2006	Completion of the line extension from Kagran to Leopoldau
	2017	Completion of the line extension from Reumannplatz to Oberlaa
	1980	Completion of the branch line from Karlsplatz to Schottenring
U2	2008	Completion of the line extension from Schottenring to Stadion
	2010	Completion of the line extension from Stadion to Aspernstraße
	2013	Completion of the line extension from Aspernstraße to Seestadt
	1991	Commissioning of the first section
U3	1998	Completion of the section from Johnstraße to Ottakring
	2000	Completion of the section from Erdberg to Simmering
U4	1976	Commissioning of the first section (trial operation)
	1981	Completion
	1989	Commissioning of the first section
U6	1995	Completion of the line extension to Siebenhirten
	1996	Completion of the line extension to Floridsdorf

Vienna City Information

Approximate population	1.89M
Area (km ²)	414.9
Number of districts	23
Number of employed persons	826,040
Number of registered cars (including taxis)	701,657



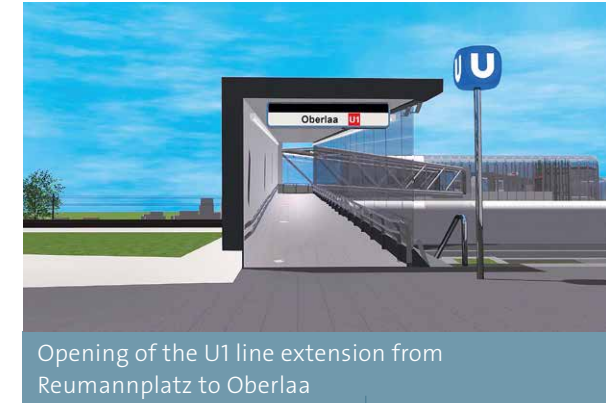
First horse-drawn tram



Takeover of DT K&C by Vienna City Council; the first motor-driven bus line enters operation



Launch of a daily, city-wide night-time bus service with 22 lines; the ultra low-floor tram ULF enter operation



Opening of the U1 line extension from Reumannplatz to Oberlaa

Wiener Stadtwerke Verkehrsbetriebe becomes a private company: Wiener Linien GmbH & Co KG

Modernisation of the U4 underground line

1865

1883

1897

1907

1949

1982

1995

1999

2010

2013

2014 – 2024

2017 2018

2024

First steam-powered tram line from Hietzing to Perchtoldsdorf

Wiener Stadtwerke founded (power plants, gasworks, transport services)

Opening of the U2 line extension from Aspernstraße to Seestadt

First tram line powered by electricity

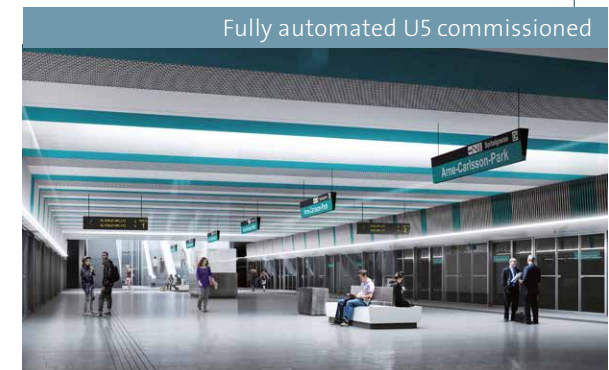
Completion of the U1 underground line which also meant completion of the basic underground network

Underground lines begin operating during the night at weekends and before public holidays

Start of work to extend the U2 to Matzleinsdorfer Platz and construction of the first section of the U5 to Altes AKH



Fully automated U5 commissioned



Operating branches in total

LINES	
Number of lines	161
Number of train and bus depots	10
Number of stops	5,359
LENGTH (KM)	
Network	263.0
Operational network	255.3
Total length of lines	1,149.1
Total track length	670.3
VEHICLES	
Railcars and tramcars	1,283
Trailers	286
Buses	469
Available seats	267,745
OPERATING PERFORMANCE (KM)	
Railcar, tramcar and bus revenue kilometres operated	112.9M
Revenue kilometres contracted	17.5M
Trailer revenue kilometres operated	19.7M
Total amount of revenue kilometres	150.1M
Total passenger kilometres	20,234.8M
KEY PASSENGER FIGURES	
Number of passengers	961.7M
Number of passengers per revenue kilometre operated	6.41
Number of passengers per 100 passenger kilometres	4.75
Number of passengers per inhabitant	509
Number of passengers per day	2.63M
INVESTMENT DURING THE FINANCIAL YEAR (€)	
Capital expenditures in intangible and fixed assets	241M
of which underground extension	114M
RIGHT OF WAY MEASURES	
Radio-operated traffic lights	416
Caps (extended foot paths)	617

Underground



LINES	
Number of lines	5
Number of train depots	3
Number of stops	109
Average distance between stops (m)	768.9
Average line length (km)	16.6
Average journey speed (km/h) at peak times, during the day and in the evening	32.7
LENGTH (KM)	
Network length	87.4
Operational network	83.3
Total length of lines	83.0
Total track length	253.2
Girder rail to vignole rail ratio	2% to 98%
STRUCTURAL ELEMENTS	
Width of track (mm)	1,435
Double-tracked route (km)	167.9
Number of points	619
VEHICLES	
Average number of trains in operation (Mon – Fri)	126
Total number of railcars	780
Type ‚Silver arrow‘ railcars	388
Type V railcars	248
Type T railcars	144
Control trailers (Type V)	124
Available seats	136,940
Average vehicle capacity	151.5
OPERATING PERFORMANCE (KM)	
Total amount of revenue kilometres operated	83.6M
Railcar revenue kilometres operated	68.6M
Trailer revenue kilometres operated	15.0M
Passenger kilometres	12,787.2M
KEY PASSENGER FIGURES	
Total number of underground passengers	453.6M

Tram



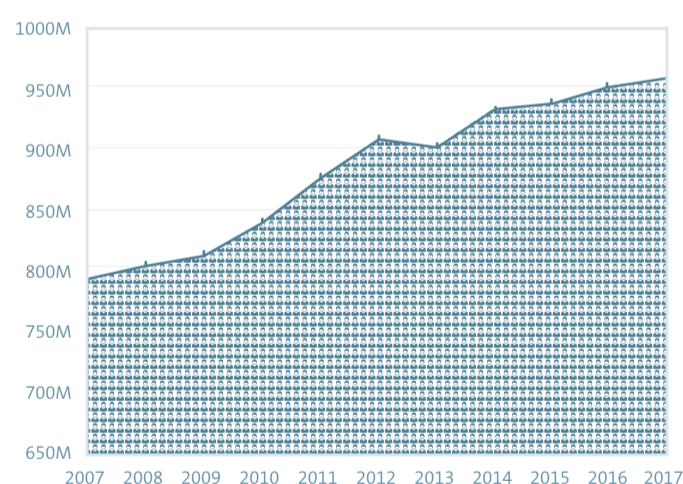
LINES	
Number of lines	28
Number of tram depots (excluding satellite tram stations)	4
Number of stops	1,053
Average distance between stops (m)	395.3
Average line length (km)	7.9
Average journey speed (km/h) at peak times	15.0
during the day	15.3
in the evening	16.5
LENGTH (KM)	
Network length	175.6
Operational network	172.0
Total length of lines	220.4
Total track length	417.1
Girder rail to vignole rail ratio	91% to 9%
STRUCTURAL ELEMENTS	
Width of track (mm)	1,435
Double-tracked route (km)	337.8
Number of points	1,111
VEHICLES	
Average number of trains in operation (Mon – Fri)	398
Total number of tramcars	503
Articulated tramcars	171
Ultra low-floor articulated trams (ULF)	332
Trailers	162
Available seats	89,867
Average vehicle capacity	135.1
OPERATING PERFORMANCE (KM)	
Total amount of revenue kilometres operated	27.6M
Railcar revenue kilometres operated	22.9M
Trailer revenue kilometres operated	4.7M
Passenger kilometres	4,244.8M
KEY PASSENGER FIGURES	
Number of passengers	305.8M
RIGHT OF WAY MEASURES	
Dedicated tram routes separated from private traffic (%)	55.2
Caps (extended foot paths)	220

Bus

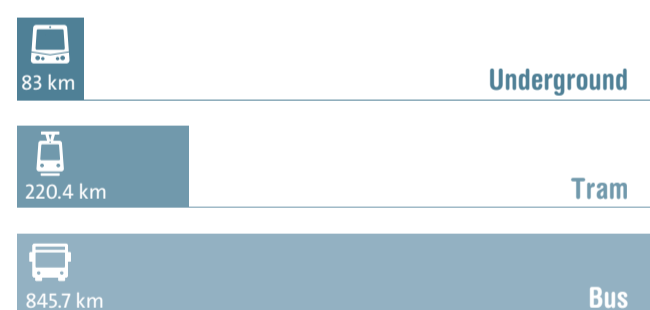


LINES	
Number of lines (including contractual traffic and Nightline)	128
Number of bus depots	3
Number of stops	4,197
Average distance between stops (m)	403.0
Average line length (km)	6.6
Average journey speed (km/h) at peak times	17.2
during the day	17.7
in the evening	20.0
LENGTH (KM)	
Total length of lines	845.7
VEHICLES	
Average number of buses in operation (Mon – Fri)	371
Low-floor articulated buses (4-door)	259
Low-floor normal buses (3-door)	183
Low-floor normal buses (2-door)	15
Low-floor battery-powered buses (2-door)	12
Total number of buses	469
Available seats	40,938
Average vehicle capacity	87.3
OPERATING PERFORMANCE (KM)	
Total amount of revenue kilometres	38.9M
Revenue kilometres operated	21.4M
Revenue kilometres contracted	17.5M
Total passenger kilometres	3,202.8M
Passenger kilometres operated	1,897.7M
Passenger kilometres contracted	1,305.1M
KEY PASSENGER FIGURES	
Number of passengers	202.3M
FUEL CONSUMPTION	
Liquid gas (litres)	10.4M
Litres per revenue kilometre operated	1.1
Litres per 100 passenger kilometres operated	1.3
Diesel (litres)	6.7M
Litres per revenue kilometre operated	0.57
Litres per 100 passenger kilometres operated	0.61
RIGHT OF WAY MEASURES	
Dedicated bus lanes separated from private traffic (%)	4.8
Caps (extended foot paths)	397

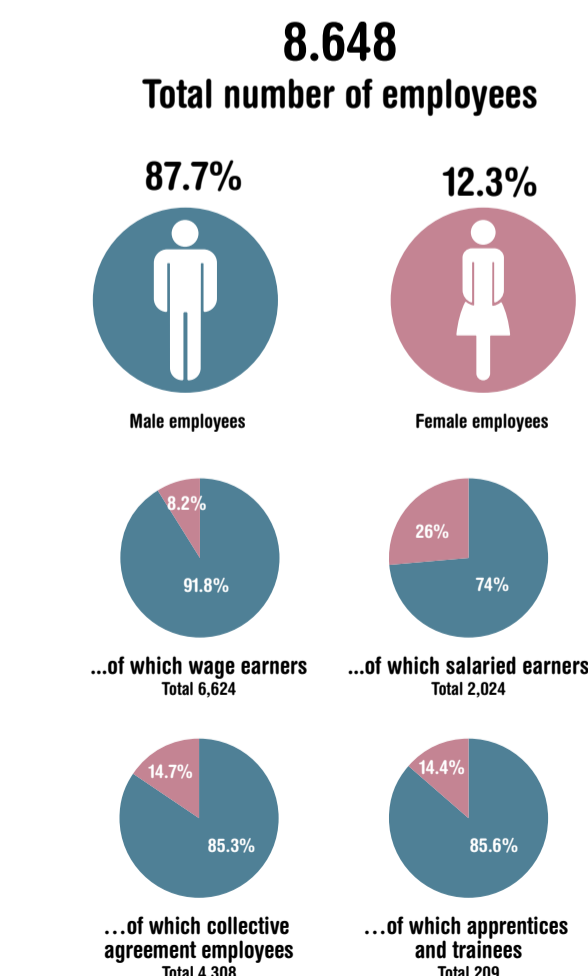
Passenger Numbers



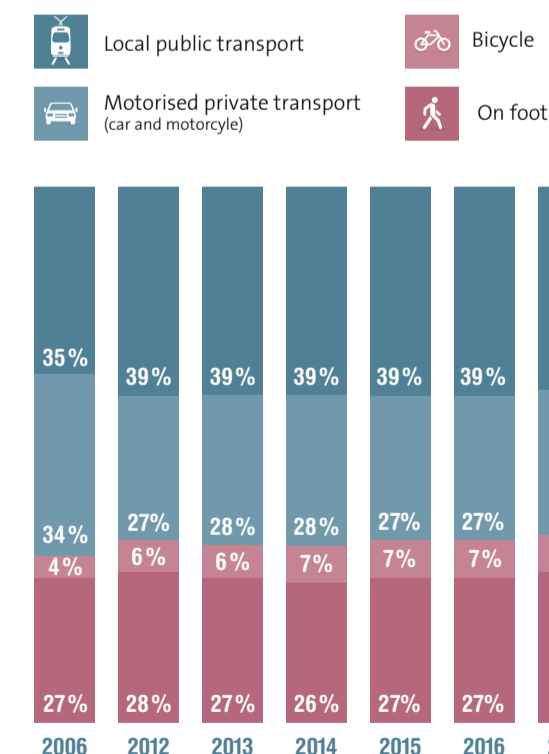
Comparison of Line Lengths



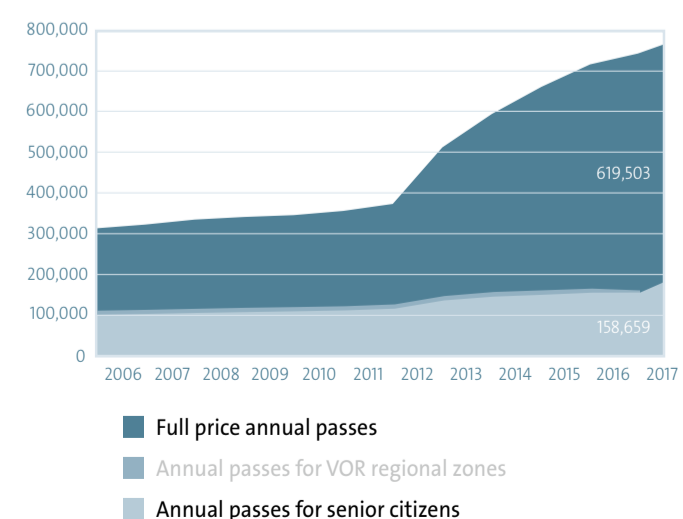
Employees



Modal Split



Annual Passes



Revenues by Ticket Type

